



REPORT ON SDG 10: REDUCED INEQUALITIES



SUMGAYIT STATE
UNIVERSITY



TABLE OF CONTENTS

- 1 INTRODUCTION**
- 2 POLICY DOCUMENTS**
- 3 EDIP AND DISABILITY ACCOMMODATION POLICY**
- 4 INCLUSIVE EDUCATION CENTER**
- 5 PSYCHOLOGICAL SERVICE**
- 6 MEDICAL SERVICE**
- 7 BRIGHT FUTURE SCHOLARSHIP**
- 8 TRAINING SESSIONS FOR STUDENTS**
- 9 DORMITORY**
- 10 VARIOUS OPPORTUNITIES FOR STAFF**
- 11 VARIOUS OPPORTUNITIES FOR STUDENTS**
- 12 FUTURE GOALS**



INTRODUCTION

The report highlights the comprehensive efforts of Sumgayit State University in reducing inequalities and aligning sustainability with its activities. The University promotes affordable housing for students, provides psychological and free medical services for students and staff, has Inclusive Education Center for people with disabilities, publishes Anti-Discrimination policy, Anti-harassment policy, Disability Accommodation policy, Ethical Organizational Values, Equality, Diversity Inclusion Policy, has scholarship programs for local and international students.



POLICY DOCUMENTS

Sumgayit State University publishes Policy documents on different directions.

Anti-Discrimination Policy shows its commitment to maintaining a community and opposing forced labour dedicated to the advancement, application and transmission of knowledge and creative endeavors through academic excellence, where all people who participate in University programs and activities can work and learn together in an atmosphere free of discrimination, harassment, and retaliation.

Anti-Harassment Policy considers creation of healthy, mutual relations of SSU employees and students; application of appropriate methods related to the content of the policy; provision of appropriate psychological services, taking into account the requests and opinions of university employees, students and parents; creating a healthy environment in the team; formation of mutual social and moral environment among employees.





Equality, Diversity, Inclusion Policy (EDIP)

aims to make the various services provided to the collective members and students within the University, as well as to external partners, transparent, fair and accessible. In implementing the policy, all participants are treated equally. This policy is implemented taking into account the following features: Age, Health condition, Physical limitation, disability, Gender, Sexual orientation, Marriage and marital status, Pregnancy and motherhood, Race or Ethnicity, Social status and social status of the family, Religion or belief, Nationality and moral values, Fighting against all kinds of discrimination.

Disability Accommodation Policy

aims to create an accessible learning environment to enable Sumgayit State University (SSU) to meet the basic requirements of its courses, programs and activities. SSU is committed to ensuring human rights, fairness and independence and making its services and facilities accessible in a nondiscriminatory manner. Inclusive Education Centre is assigned to assist with all aspects of education and is responsible for assisting Students with disabilities and their teachers. Adequate support for a person with a disability is a shared responsibility among all members of SSU.





INCLUSIVE EDUCATION CENTER

The scope of activities of the Inclusive Education Center includes: to hold meetings students with disabilities in general educational institutions, to provide them with information about the activities of the center of the university, to hold meetings who admitted to the first course of the university and to inform them about the opportunities created at the university, to hold working meetings with teachers who teach students with disabilities, to participate in the preparation of exam rules for them before the exam session, to engage volunteers in the work of the center and their training, to conduct consultations with the Career and Employment Center with graduates in order to employ the graduates with disabilities, etc.



PSYCHOLOGICAL SERVICE

Sumgayit State University has been providing psychological services since 2018.

Psychology service is provided in the following areas:

- Timely discovery of students' intellectual capabilities, personality-oriented potentials, natural capabilities and abilities, interests and inclinations;
- In necessary cases, to determine the course of mental development of students, the conformity of development with age norms through diagnostic examination methods;
- To provide an individual approach in the process of educational work, to help the development of students' personal self-determination opportunities, to reveal the level of development of their interests, inclinations and abilities;
- Diagnose students' communication with seniors and group mates, determine the psychological causes of communication disorders;
- Identification of medical and defectological disorders together with specialists with relevant profiles;
- To determine the forms and causes of social behavioral violations, to carry out differential diagnosis of various deviations manifested in mental development, etc.



MEDICAL SERVICE

For protecting the health of employees and students, a free medical center operates at Sumgayit State University.

The following services are provided by the medical center:

- provision of primary emergency medical aid
- referral of employees and students to appropriate hospitals for checking up and treatment if necessary;
- regular implementation of sanitary-hygienic education among employees and students of the university, taking preventive measures to suppress and relieve illness
- identification of infectious diseases;
- providing recommendations on the formation of a healthy lifestyle.





BRIGHT FUTURE SCHOLARSHIP PROGRAM

Sumgayit State University's (SSU) Bright Scholarship Program aimed at attracting talented international students and mainly from low income countries. This program covers the full tuition fees for 100 students who wish to pursue undergraduate or graduate degrees at SSU.

**BEYNƏLXALQ TƏLƏBƏLƏR ÜÇÜN
"SDU" PARLAQ GƏLƏCƏK TƏQAÜDÜ**

- SAY:** 100 nəfər
- TƏQAÜDÜN ƏHATƏ DAİRƏSİ:**
 - Bütün təhsil xərcləri
- TƏDRİS DİLİ:**
 - Azərbaycan dili
- MÜDDƏT:**
 - Bakalavr programları üçün 4 ilə qədər
 - Magistratura programları üçün 2 ilə qədər
- NƏ ÜÇÜN SDU?**
 - Sənayenin mərkəzində yerləşmə
 - Ən müasir proqramlar
 - Uğurlu karyera planlamasına dəstək
 - Dinamik tələbə həyatı
 - Geniş və yaşıl kampus

MÜRACİƏT ÜÇÜN:



QEYD
Azərbaycan dili bacarıqları kafi səviyyədə olmayan namizədlərə kampusdə 6 aydan 1 ilə qədər pulsuz Azərbaycan dili dərsləri təklif olunacaq.

ƏTRAFLI MƏLUMAT ÜÇÜN
ird@sdu.edu.az

**"SSU BRIGHT FUTURE SCHOLARSHIP"
FOR INTERNATIONAL STUDENTS**

- NUMBER OF SCHOLARSHIPS:** 100
- COVERAGE:** Full tuition fees
- LANGUAGE OF INSTRUCTION:** Azerbaijani
- DURATION:**
 - Up to 4 years for undergraduate
 - Up to 2 years for graduate programs
- WHY SSU?**
 - Situated in an industrial hub
 - Cutting-edge programs
 - Support for career planning
 - Vibrant student life
 - Spacious green campus

APPLY NOW



NOTE
Successful candidates who do not have sufficient levels of Azerbaijani language knowledge will be offered free Azerbaijani language lessons on campus for a duration of 6 months to 1 year.

MORE INFORMATION
ird@sdu.edu.az

Sumgayit State University frequently organizes training sessions for students and staff focused on promoting human rights, freedoms, peace, and justice.

These sessions cover a range of topics, including Decent Work Day, International Human Rights Day, Human Rights Month, gender equality, and peacebuilding. The primary goal of these training programs is to enhance legal awareness, foster a peaceful atmosphere, and empower participants to better recognize and protect their rights.



Within the framework of the AZTAF program funded by the European Union and implemented by the World Bank, a series of seminars has been launched to promote gender balance in technical education and careers in Azerbaijan.



Students from former IDPs studying at Sumgayit State University participated in the project "Increasing Social Media Skills of Former IDPs for Peacebuilding and Gender Equality"

DORMITORY

The university dormitory, strategically located within the campus, offers a conducive living environment for students. It features approximately 100 rooms, designed to cater to the diverse needs of its residents. Each floor is equipped with modern amenities, including shower rooms, kitchens, and laundry facilities, ensuring convenience and comfort for all students.

On the first floor, the dormitory houses a library, dining hall, medical room, isolation room, and a dedicated laundry area, providing essential services and promoting student well-being. Additionally, the dormitory includes recreational facilities such as a fully equipped gym, a mini football field, and a volleyball court, encouraging an active and balanced lifestyle.

The rooms are designed to meet high-quality standards, offering a comfortable and functional living space with reliable heating and high-speed internet access. The overall infrastructure is thoughtfully planned to enhance the holistic experience of students, promoting sustainable living and well-being in line with the university's commitment to the Sustainable Development Goals.





VARIOUS OPPORTUNITIES FOR STAFF

SSU staff regularly participate at international professional development programs, various projects, and international events for advancing their pedagogical, research, digital, language and other essential skills. The University always support and encourage them in this direction.



INTERNSHIP OPPORTUNITIES FOR STUDENTS

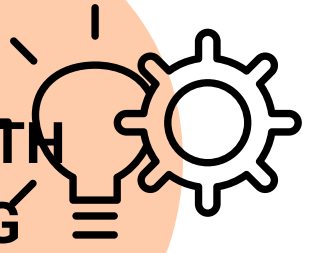


SSU offers various internship opportunities for students in cooperation with the companies from industrial sector. These internships aim to bridge the gap between academic learning and practical application, providing students with hands-on experience in their fields of study. By collaborating with industry leaders, SSU ensures that students gain valuable insights into real-world challenges and sustainable practices.

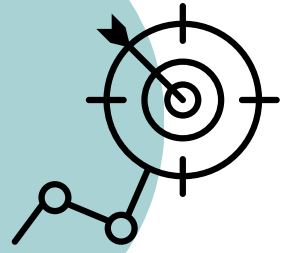


FUTURE GOALS

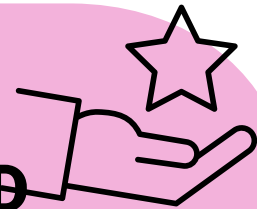
SECURE ADDITIONAL FUNDING OR PARTNERSHIPS TO OFFER SCHOLARSHIPS IN FIELDS ALIGNED WITH SUSTAINABILITY GOALS, PROMOTING DIVERSITY AND INCLUSION.



LAUNCH MENTORSHIP PROGRAMS FOR WOMEN IN LEADERSHIP, STEM, AND OTHER UNDERREPRESENTED AREAS TO PROMOTE GENDER EQUALITY.



COLLABORATE WITH INTERNATIONAL UNIVERSITIES, NGOS, AND GOVERNMENTS FOCUSED ON SDG 10.



DEVELOP CURRICULA THAT REFLECT DIVERSE CULTURES, EXPERIENCES, AND PERSPECTIVES, AND TRAIN FACULTY TO ADOPT INCLUSIVE TEACHING PRACTICES



PROMOTE RESEARCH THAT ADDRESSES ISSUES OF INEQUALITY AND SOCIAL JUSTICE.

